

Discover BEOVU

A treatment for
diabetic macular edema (DME)

INDICATION

BEOVU® (brolucizumab-dbl) injection is used for the treatment of Neovascular (Wet) Age-related Macular Degeneration (AMD) and Diabetic Macular Edema (DME).

IMPORTANT SAFETY INFORMATION

You should not use BEOVU if you have an infection in or around the eye, eye inflammation, or if you are allergic to brolucizumab or any of the ingredients in BEOVU.

Please see additional Important Safety Information throughout and full Prescribing Information.


Beovu®
(brolucizumab-dbl)
Injection

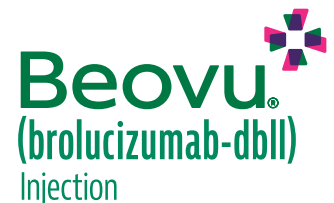


Do you remember when your doctor diagnosed you with DME? Fortunately, there are options to help manage the disease. On the following pages, you'll find information about how **BEOVU** can help treat DME.

IMPORTANT SAFETY INFORMATION (cont)

BEOVU is a prescription medicine given by injection into the eye. Injections in the eye, including BEOVU, may cause an infection of the eye or retinal detachment (separation of retina from the back of the eye). It is important to contact your doctor right away if your eye becomes red, sensitive to light, painful, or you develop any change in your vision.

Please see additional Important Safety Information throughout and full [Prescribing Information](#).

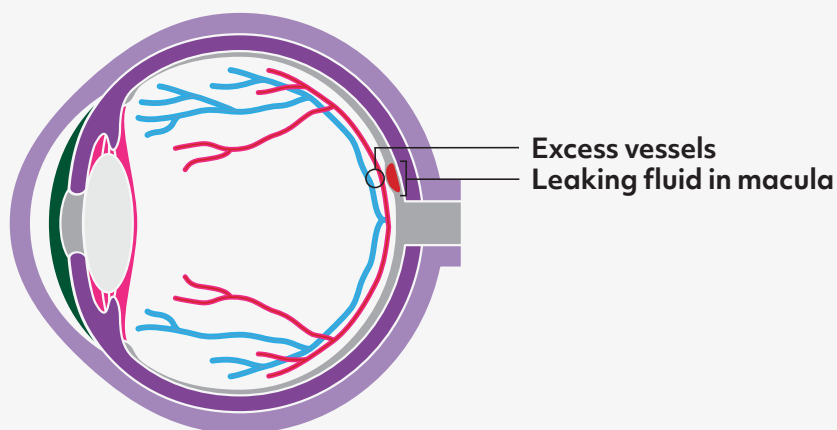


What is DME?

DME is a condition caused by diabetes that can lead to distorted vision or vision loss. When you have DME, damage in your eye due to diabetes can cause the growth of new blood vessels. These blood vessels leak fluid into the part of the eye called the macula.

The macula is responsible for central vision, which is what you use to do things like drive or read. Fluid buildup causes swelling in the macula, which distorts your vision.

Understanding DME



IMPORTANT SAFETY INFORMATION (cont)

Increased eye pressure has been seen within 30 minutes of an eye injection, including BEOVU. Sustained increases in eye pressure also have been reported. Your doctor should monitor for this when you receive a BEOVU injection.

Please see additional Important Safety Information throughout and full [Prescribing Information](#).

Beovu[®]
(brolucizumab-dbl)
Injection

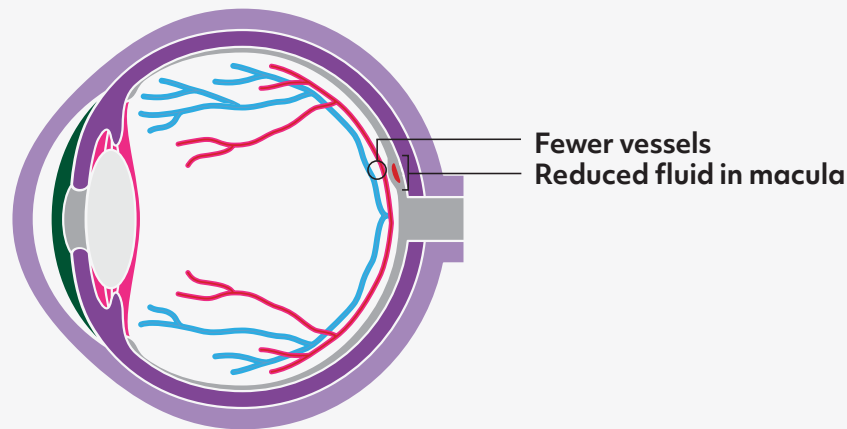
How BEOVU works

What is vascular endothelial growth factor?

Vascular endothelial growth factor (VEGF) is a protein responsible for producing new blood vessels. DME can cause VEGF to become overactive, which drives the growth of new blood vessels that can leak fluid into the macula.

BEOVU blocks VEGF

BEOVU blocks a type of VEGF to help slow the growth of new blood vessels, which may help to prevent fluid leaking into the macula.



IMPORTANT SAFETY INFORMATION (cont)

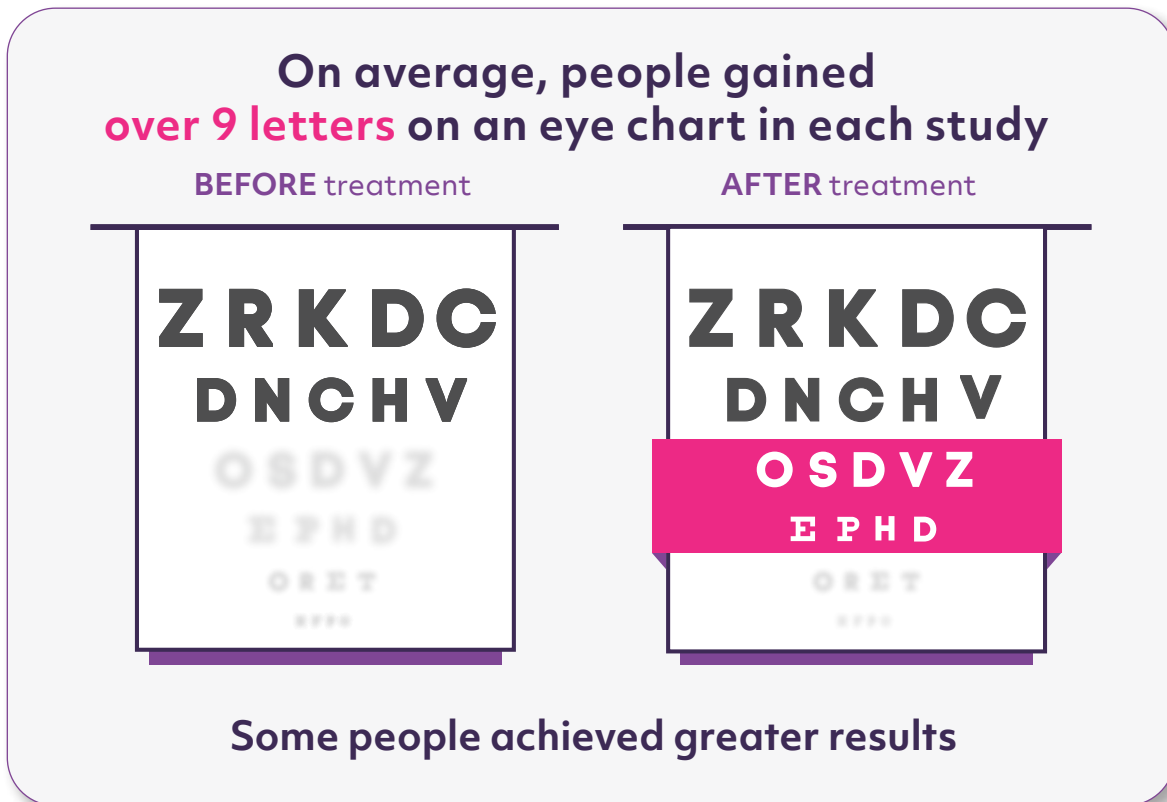
There is a potential risk of stroke, heart attack, or blood clots in patients receiving eye injections of vascular endothelial growth factor (VEGF) inhibitor drugs, including BEOVU. Sudden vision loss due to blockage of the blood vessels in the back of the eye and inflammation of blood vessels in the back of the eye have been reported.

Please see additional Important Safety Information throughout and full [Prescribing Information](#).

Beovu[®]
(brolucizumab-dblj)
Injection

People experienced vision improvements with BEOVU

BEOVU was assessed in 368 people with DME across 2 clinical studies. Both studies measured the mean change in best corrected visual acuity (ability to read letters on an eye chart) at Year 1.

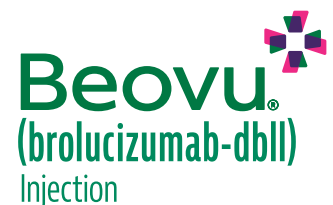


More than 1 out of 3 people in each trial gained 15 letters or more.

IMPORTANT SAFETY INFORMATION (cont)

The most common side effects reported in patients receiving BEOVU in the wet AMD studies were reduced clarity in vision, cataract, broken blood vessels in the eye, eye pain, and vitreous floaters (moving spots in the field of vision). The most common side effect reported in patients receiving BEOVU in the DME studies was broken blood vessels in the eye.

Please see additional Important Safety Information throughout and full [Prescribing Information](#).



With BEOVU, it's possible to maintain vision

Both studies also measured the percentage of people who maintained vision at Year 1.

OVER
98%

of people in both studies maintained their vision with BEOVU at Year 1



Remember, staying consistent with your appointments can help maintain your vision.

IMPORTANT SAFETY INFORMATION (cont)

You are encouraged to report negative side effects of prescription drugs to the FDA.

Visit www.fda.gov/medwatch, or call 1-800-FDA-1088.

Please see full [Prescribing Information](#).

Please see additional Important Safety Information throughout and full [Prescribing Information](#).

Beovu[®]
(brolucizumab-dbl)
Injection

Treatment every 3 months is possible with BEOVU

For the first 5 treatments, BEOVU is given every 6 weeks.* The recommended starting dose for other anti-VEGFs is every 4 weeks according to their approved dose for DME. BEOVU is then given once every 2 or 3 months depending on how well your eye responds to treatment.



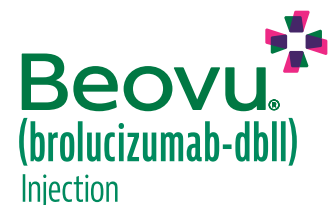
Your doctor will determine the individual dosing schedule that's right for you.

*The recommended dose for BEOVU is 6 mg (0.05 mL of 120 mg/mL solution) every 6 weeks (approximately every 39-45 days) for the first 5 doses, followed by one dose of 6 mg (0.05 mL) every 8-12 weeks.

INDICATION

BEOVU® (brolucizumab-dbl) injection is used for the treatment of Neovascular (Wet) Age-related Macular Degeneration (AMD) and Diabetic Macular Edema (DME).

Please see additional Important Safety Information throughout and full [Prescribing Information](#).



Take a proactive approach to your vision

When living with DME, it's important to make sure you're doing what you can to make your treatment as successful as possible. DME is a chronic condition, but it may be possible to manage.

Below are 3 ways to help take charge of your DME treatment:

- 1 | Stay on schedule with your appointments**
Getting consistent treatment is important for DME. Create a routine that helps you prioritize your vision care and keep appointments.
- 2 | Prepare for treatment days**
Before your appointment, schedule transportation to and from treatment and prepare questions for your doctor.
- 3 | Monitor your vision**
Keep track of any vision changes between appointments and alert your doctor if you notice anything unusual.

IMPORTANT SAFETY INFORMATION

You should not use BEOVU if you have an infection in or around the eye, eye inflammation, or if you are allergic to brolucizumab or any of the ingredients in BEOVU.

Please see additional Important Safety Information throughout and full [Prescribing Information](#).

Beovu[®]
(brolucizumab-dblj)
Injection



Learn more about DME and how to stay on track at [BEOVU.com](https://www.beovu.com)

INDICATION

BEOVU® (brolucizumab-dbl) injection is used for the treatment of Neovascular (Wet) Age-related Macular Degeneration (AMD) and Diabetic Macular Edema (DME).

IMPORTANT SAFETY INFORMATION

You should not use BEOVU if you have an infection in or around the eye, eye inflammation, or if you are allergic to brolucizumab or any of the ingredients in BEOVU.

BEOVU is a prescription medicine given by injection into the eye. Injections in the eye, including BEOVU, may cause an infection of the eye or retinal detachment (separation of retina from the back of the eye). It is important to contact your doctor right away if your eye becomes red, sensitive to light, painful, or you develop any change in your vision.

Increased eye pressure has been seen within 30 minutes of an eye injection, including BEOVU. Sustained increases in eye pressure also have been reported. Your doctor should monitor for this when you receive a BEOVU injection.

There is a potential risk of stroke, heart attack, or blood clots in patients receiving eye injections of vascular endothelial growth factor (VEGF) inhibitor drugs, including BEOVU. Sudden vision loss due to blockage of the blood vessels in the back of the eye and inflammation of blood vessels in the back of the eye have been reported.

The most common side effects reported in patients receiving BEOVU in the wet AMD studies were reduced clarity in vision, cataract, broken blood vessels in the eye, eye pain, and vitreous floaters (moving spots in the field of vision). The most common side effect reported in patients receiving BEOVU in the DME studies was broken blood vessels in the eye.

You are encouraged to report negative side effects of prescription drugs to the FDA. Visit www.fda.gov/medwatch, or call 1-800-FDA-1088.

Please see full [Prescribing Information](#).



Novartis Pharmaceuticals Corporation
East Hanover, New Jersey 07936-1080

©2022 Novartis

6/22

175215

